

M. L. Mulvey

The Scroll

1939

The Scroll



PUBLISHED BY THE STUDENTS OF

Central Islip High School

CENTRAL ISLIP, NEW YORK



Miss Helen M. Clark

DEDICATION

The School as well as the Scroll owe Miss Clark a debt which can not be fully paid for she has been not only a superior advisor but a sympathetic and understanding friend to all. With these thoughts we gratefully dedicate this book to her.



SCROLL STAFF



Editor-in-Chief.....Anne Furman
 Associate Editors.....Eileen Sulima, Bernice Eisenschmied
 Business Manager.....Veronica Boyle
 Circulation Manager.....Letitia Perrin
 Advertising Manager.....Monica Flynn
 Head Typist.....Elizabeth Warburg
 Art Editor.....Eris Scarselli
 Sports.....Margaret Clarke, Joe Scott
 Humor.....Clayton Flynn, Rose Mallon
 Typists—
 Joseph Weber, Irma Seale, Rose Mallon, Elizabeth Warburg, Eileen
 Sulima, Catherine Johnstone, Letitia Perrin, Bernice Eisenschmied,
 Rosemary McKeever.
 Alumni Editor.....Clayton Flynn
 Exchange Editor.....Barbara Cramer
 Faculty Advisor.....Mr. Lawrence Hynes
 Reporters—
 Clayton Flynn, Eris Scarselli, George Fischer, Irma Seale, Catherine
 Johnstone, Mildred Devine, Doris McCrone, Barbara Cramer, Helen
 Shaughnessy, Margaret Clarke, Martin Hulka, Joseph Scott, Ina
 Zirkler, Gus Kuschneleit.

C. I. H. S.,
Near Room 3,
June 2, 1939.

Dear 39's,

As you are about to go out into the wide, wide world I wonder if you would like to push the hands of the clock back for a generation? Do you believe that the professions and other occupations were less crowded then than now and that there were more opportunities to get ahead? Do you think that in this day of big business, of ultra modern machinery that is rapidly replacing skilled human beings, the door to opportunity has been swung tightly shut in your faces? Or do you believe that opportunity still exists?

Science points out that not only does opportunity exist for you today as it always has but that in seizing that opportunity you can do so with greater ease and comfort as well as with more help than formerly.

The big problem today is not to determine if opportunity exists, but where it exists. In doing this it is exceedingly important that you know what occupations are growing, which are declining and how fast these changes are taking place.

Since 1910 employment in the basic industries such as manufacturing, mining, farming, and transportation has increased but six per cent, although production has increased eighty-six per cent.

How about opportunities for young people in the occupations and professions such as doctors, lawyers, dentists, and architects? This group of workers concerned with rendering service to other workers has grown fifty per cent while the population itself has increased only thirty-five per cent. Here then is a field that is being over-crowded not because science is replacing human beings with machines, but because the growth of the population itself has not kept up with the growing number who are seeking opportunity in this field.

Where to then? There is still a third field to be considered. Even though science has devised machines that will replace human beings in producing merchandise, that merchandise itself can neither be supervised nor disposed of by machinery. This must be done by human beings. No less than five million people have found employment in financing, selling, and trading in the goods produced or grown, as well as in managing and administering all of the public and private business of the country. It is in this field that the vast majority of opportunities may be found.

Concretely, in 1920 many more men were required to make an automobile than are required now, but it takes just as many people now to finance and supervise its manufacture and to keep accounts, advertise and sell it as it did twenty years ago, and we now manufacture twenty times as much as then. The employment in this field has increased tremendously, but it has not kept pace with the growth in population and production, and it is therefore the field of greatest opportunity today.

Whether in business, industry, or the professions there still exists today opportunity for the capable man or woman as it has since time immemorable. There definitely is room at the top, and somewhere on the ladder of opportunity you will find your place. I hope it is at the top, but wherever it is may it prove to be a happy and useful space in your plan of life.

Yours very sincerely,

Harry W. Rude.



BOARD OF EDUCATION

Maurice Breen, Clerk
Harry Bernstein

Vern L. Furman, President

Charles A. Mulligan
William McCrone

District Superintendent of Schools
Walter M. Ormsby, Bayport, N. Y.

THE FACULTY

Harry W. Rude, Supervising Principal

ELEMENTARY SCHOOL

Marguerite L. Mulvey, Principal and Third Grade
Margaret F. Smith, First Grade
Ruth M. Collins, Second Grade
Florence A. Mulvey, Fourth Grade
Frances I. McBreen, Fifth Grade
Eleanor J. Richards, Sixth Grade

JUNIOR AND SENIOR HIGH SCHOOL

Dorothy M. Cain, Librarian and English
Helen M. Clark, Commercial Subjects
Eileen Hammill, Latin and French
Harold A. Haynes, Commercial Subjects
Lawrence W. Hynes, Social Studies and History
Madeline A. Mulligan, Mathematics and Social Studies
David N. Rogers, Natural and Physical Sciences
Dorothy M. Sullivan, English and Public Speaking
Lester L. Woodward, Mathematics

SPECIAL TEACHERS

Walter J. Calhoun, Industrial Arts
Rae R. Gerard, Girls' Health and Physical Education
Paul E. Krause, Boys' Health and Physical Education
Jane L. Person, Homemaking and Cafeteria Supervision
Charles VanSchaick, Music Supervisor

OTHER EMPLOYEES

Eileen Storey, School Secretary
Dr. Earl M. McCoy, Medical Inspector
Dorothy McMaster, School Nurse and Health Teacher
Chester H. Beebe, Treasurer
Robert E. Senne, Census Enumerator and Attendance Officer
Christian Wohlfarth and Michael Griffin, Custodians

Boyle, Veronica—

"Ronnie's" friendliness and efficiency will carry her a long way in later life. Business manager of Scroll 3, 4; Basketball 3, 4.

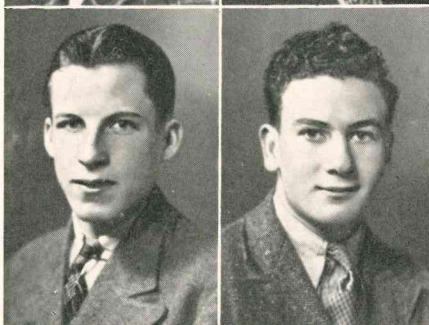


Fischer, George —

A master of words as well as wit. Golf team 2, 4; Radio Club 2.

Brewer, Eugene—

"Gene" is an exceptional boy, as he excels in both studies and sports. Class President 2; Baseball 4; Secretary-Treasurer of Student Organization 2; Salutatorian.



Flynn, Clayton—

Detective Flynn, always finds a joke or supplies one. Scroll 3, 4; Baseball 2, 3; Track.

Cassidy, Francis—

If a sense of humor is an indication of success, Frank is sure to be successful.

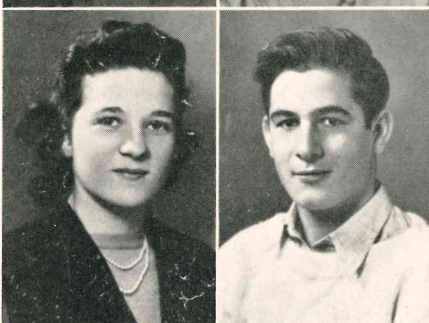


Flynn, Monica—

A quick smile, blonde hair, blue eyes, Monica typifies. Band, Orchestra 3, 4; Basketball 3, 4; Scroll 3; Advertising Manager 4; Cheerleader 3, 4.

Clarke, Margaret—

Vivacious is the word for "Peg". Basketball 2, 3, 4; Senior Play 4; Secretary and Treasurer 1; Dramatics Club 4; prophecies of Class Night Committee; Band 2, 3, 4.



Fuori, John—C.

Is best all-round athlete, with a high regard for sportsmanship. Golf, Captain 3, 4; Basketball 1, 2, 3, Captain 4; Baseball 2, 3, 4; Soccer 2, 3.

Eisenschmied, Bernice—

Equal to any Lowell in poetic ability is Bernice, the poet of the senior class. Senior Play 4, Oratorical Contest 2; Glee Club 1, 2; Band and Orchestra 2, 4.



Furman, Anne—

An orator, student and a journalist. Oratorical contest 2, 4; Scroll 2, Editor 4; Member of Student Council 4; Senior Play 2, 4; Vice-President 1; Glee Club 1, 2; Dramatics Club 2, 4; Speech Club 1; Chairman Class History, Class Night Committee.

Ende, Edward—

"Hank's" ability in sports is to be envied. Baseball 1, 2, 3; Vice-President 1; Scroll 2; Soccer 3.

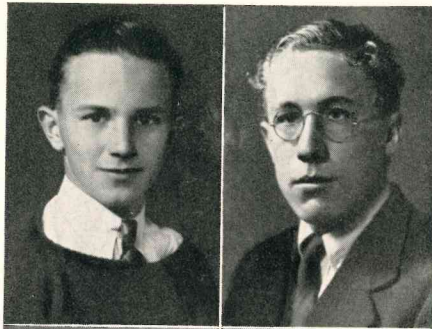


Hogan, James—

Inspiration for Dale Carnegie's book, "How to Win Friends and Influence People." Band and Orchestra 3, 4; Track 3.

Hulka, Martin—

Scientist and Musician of the school. Band and Orchestra 1, 2, 4; Track 4; Science Club 4; Photography 4.

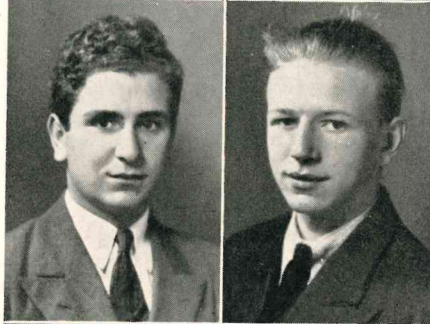


Kuhlken, William—

Although he's been here only a year, William has contributed to the success of the Senior Class. Science Club 4.

Iacqua, Joseph—

That curly hair may account for that attractive blush.



Kuschnerreit, Edward—

A student of high honor and integrity. Senior Play 3; Basketball 4; Treasurer Radio Club 2.

Jacobsen, Howard—

A good character actor, and an asset to the Senior class. Senior Play 4; Dramatics Club 3, 4.

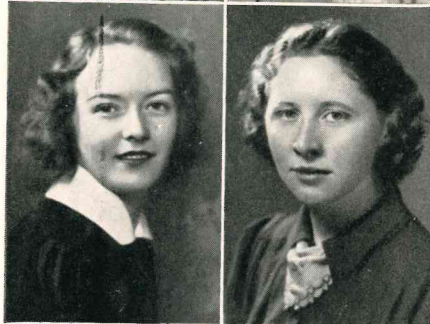


Laspina, Carmela—

Quality not quantity. Science Club 4; Cake Sale Committee 4.

Johnstone, Catherine—

Quiet and unassuming, yet her presence is felt. Glee Club 2, 3, 4; Cheerleader 3.

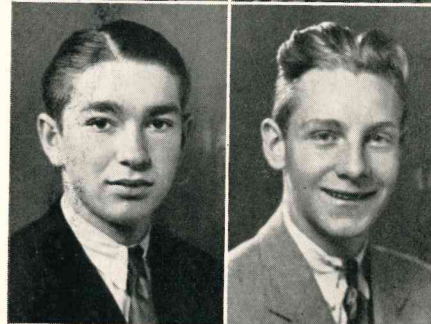


McKeever, Rosemary—

A worthy combination of wit and common sense. Senior Play 4; Oratorical Contest 4; Dramatics Club 4; Science Club 4; Scroll 4.

Kerber, Albert—

A congenial fellow who ranks high in scholastic ability. Basketball 4; President Radio Club 2.



Martin, Frank—

Frank personifies energy and good-fellowship. Band 2, 3, 4; Senior Play 4; Scroll 3, 4; Orchestra 2, 3, 4; Photography Club 3, 4.

Kerbs, John—

His two years here have made a definite impression on the school. President Student Organization 4; Senior Play 4; Track Team 4.



Organ, Mary—

A worthy leader and a fine friend. Class President 4; Basketball 2, 3, 4; Chairman Class Gifts, Class Night Committee; Vice-President 2, 3; Senior Play 4; Oratorical Contest 4; Band and Orchestra 1, 3, 4; Glee Club 2, 3, 4; Treasurer Student Organization 4.

Pennenga, Samuel—

If "Sam" hadn't been here, a great deal of our high school laughter and joy would have been missing. Senior Play 3; Dramatics Club 3, 4.



Sulima, Eileen—

A friend, a student, and a sport. Oratorical Contest 3, 4; Senior Play 3, 4; Vice-President Dramatics Club 3, 4; Science Club 4; Scroll 3, Assistant Editor 4; Chairman Prophecies, Class Night Committee.

Pennenga, Faith—

Demure and exceedingly likeable, that's "Fifi." Glee Club 2, 3; Basketball 1, 2, 4.



Ullman, Albert—

Albert has made a fine record in scholarship and athletics. Soccer 3, 4; Track 3, 4; Valedictorian; Basketball 3, 4; Baseball 3; Class President 3.

Rhyne, Roland—

He's been judged the school dreamer, but we bet he sees thru the fog. Basketball 3; Senior Play 4.



Waddington, Richard—

If there's an answer to it "Dick" knows it.

Schmidt, Herta—

Her friendliness and sportsmanship have endeared her to the hearts of her fellow-classmen. Glee Club 2, 3; Chairman for Class Will, Class Night Committee; Class Treasurer 2, 3, 4; French Club 3, 4.



Warburg, Elizabeth—

"Liz" is a petite blonde who would make the perfect secretary. Scroll 3, Head Typist 4; Class Secretary 2, 3, 4; Glee Club 3, 4; Treasurer 2; Cheerleader 3, 4; Orchestra 1, 2, 3, 4.

Seale, Irma—

A good sport both on and of the athletic field. Basketball 3, 4; Senior Play 4; Cheerleader 3, 4.



Weber, Elizabeth—

The tall member of the Senior Class has a shyness that is attractive. Science Club 4.

Shaughnessy, Helen—

This happy-go-lucky girl will leave a hollow in our school lives. Glee Club 2, 3; Band 2, 3, 4; Chairman of Gifts, Class Night Committee; Secretary and Treasurer Dramatics Club 3.



Williams, Theodore—

A philosopher, a gentleman, "Ted" is both. Band and Orchestra 2, 4.

Perrin, Letitia—

(NO PICTURE)

Determination is her outstanding characteristic. Scroll 2, Circulation Manager 3, 4; Glee Club 2, 3, 4; Cheerleader 3.



SENIOR CLASS HISTORY



In 1935 we began our high school career by electing Brendan Devine President; Edward Ende, Vice-President and Margaret Clarke as Secretary and Treasurer. Mr. Van Dyke was chosen our class advisor. As Freshmen we proved ourselves a model class and had high hopes for a successful Sophomore year.

In all too short a time we found ourselves back to school again for our second year. Gene Brewer was chosen President; Mary Organ, Vice-President; Herta Schmidt, Treasurer and Elizabeth Warburg, Secretary. Miss Seymour and Mr. Lawrence were chosen class advisors.

On October 30th we gave a dance which was a huge success. Later on we gave a "Get Wise" Assembly for the Freshmen at which we proved the superiority of the Sophomore Class.

Our Junior year, we felt, held a good many things in store for us. Albert Ullman was as President, Mary Organ was chosen Vice-President, Herta Schmidt, Treasurer and Elizabeth Warburg, Secretary.

In December we held a Christmas party which turned out to be one of the gala events of the year. Our crowning glory, however, was the Junior Prom which will be the envy of many classes to come.

In 1938 we entered the high school building for our last year, bound to make a huge success of it. Mary Organ was chosen President, Gene Brewer Vice-President, Gerta Schmidt, Treasurer, and Elizabeth Warburg Secretary. Miss Sullivan and Mr. Woodward were chosen class advisors. On October 15 a cake sale was held to raise money for our Washington Trip. On November 22 we gave our Senior play, "Mama's Baby Boy," which turned out to be our greatest triumph. In April we at last went on our long awaited and talked of Washington Trip.

Now that the end of these four years are so nearly over with, all we can say is, that without the friendship and help of our class advisors and fellow students our high school days could never have been so happy and successful.

Name	Nickname	Favorite Pastime	Likely to be Found	Likely to become
Veronica Boyle	"Ronnie"	Riding in a Ford	with "Jim" McLoughlin	a Housewife
Eugene Brewer	"Gene"	Playing Baseball	by Levy's	Brilliant
Francis Cassidy	"Fat"	Talking to "Liz" Warburg	with Gene	Handsome
Margaret Clarke	"Peggy"	Looking for "Butch"	with "Butch"	Sweetheart of the Navy
Bernice Eisenschmeid	"Marky"	Writing Poetry	deep in thought.	A poet
Edward Ende	"Hank"	Riding with "Bud"	in a daze	Henpecked
George Fischer	"Tiny"	Arguing	with the Pro.	a philosopher
Clayton Flynn	"Curley"	Jerking sodas	in "Louie's"	Manager
Monica Flynn	"Blondie"	Playing a sax	around	a doctor's wife
John Fuori	"Johnnie"	Playing golf	with a golf club	champ
James Hogan	"Jimmy"	Walking "Hesse" home	in Slater Park	an orator
Anne Furman	"Snap"	Appointing committees	writing editorials	a Journalist
Carmela Laspina	"Millie"	Studying	with a book	a Nurse
Martin Hulka	"Becky"	Swinging out	Playing "Three Little Fishes"	a jitterbug
Rosemary McKeever	"Nolly"	Chemistry	with Eileen	a cowboy's sweetheart
Frank Martin	"Pep"	Talking	Playing nurse-maid to the chickens	a scientist
Catherine Johnstone	"Bud"	Riding	with Hank	a grandmother
Albert Kerber	"Al"	Studying	behind a baseball bat	a broad jumper
John Kerbs	"Butch"	"Looking for "Peg"	Naval school	a sailor
William Khulken	"Billy"	Making eyes	scouting around	a heartbreaker
Edward Kuschneleit	"Eddie"	Studying	grinning	a good student
Faith Pennenga	"Fifi"	Looking pretty	in Brentwood	a secretary
Samuel Pennenga	"Sam"	Acting silly	in Hauppauge	a comedian
Letitia Perrin	"Lee"	Arguing	with Dean	happily married
Herta Schmidt	"Smitty"	Laughing	with F. Stresser	a model
Roland Rhyne	"Guam"	Getting out of work	at Max Johnson's	lazy
Irma Seale	"Irm"	Missing the bus	walking to Brentwood	a Marathon walker
Helen Shaughnessy	"Pudge"	Skating	in Islip	a Man-hater
Eileen Sulima	"Lenny"	Reading	Laughing	a success
Albert Ullman	"Allie"	Doodling	Thinking	President
Richard Waddington	"Dick"	Mechanics	with Mom	Stand-in for Donald Duck
Elizabeth Warburg	"Mickey"	Waiting for Pat	with Fran	Serious
Elizabeth Weber	"Liz"	Making eyes at Cass	In the Stratosphere	Taller
Howard Jacobsen	"Jake"	Falling off the bars	In a hospital	a Contortionist
Joseph Ilacqua	"Joe"	Riding	Talking	a Businessman
Mary Organ	"Red"	Dreaming	With Herta	an Actress
Theodore Williams	"Ted"	Sleeping	Studying	a Teacher



COMPOSITE STUDENT

BOYS		GIRLS
Clayton Flynn	HAIR	Mary Organ
William Renke	EYES	Elizabeth Warburg
Martin Hulka	TEETH	Irene Gleason
John Kerbs	CLOTHES	Anne Furman
Clayton Flynn	ABILITY TO DANCE	Mildred Devine
Albert Ullman	BRAINS	Eileen Sulima
Harold Kerbs	PERSONALITY	Mildred Devine
Sam Pennenga	HUMOR	Herta Schmidt
John Fuori	ATHLETIC ABILITY	Frances Hesse
John Fuori	ENERGY	Frances Hesse

HALL OF FAME

Most Popular Boy—Albert Ullman. School Dreamer—Roland Rhyne.
 Most Popular Girl—Mary Organ. School Gossip—Edith Lowe.
 Best Looking Boy—John Kerbs. Man Hater—Anne Furman.
 Best Looking Girl—Peggy Clarke. Woman Hater—Eugene Brewer.
 Best Student—Boy—Albert Ullman. Noisiest—Frank Cassidy.
 Best Student—Girl—Eileen Sulima. Best Actor—Sam Pennenga.
 Best Athlete—Boy—John Fuori. Best Actress—Anne Furman.
 Best Athlete—Girl—Audrey Lindquist. Most Original—Sam Pennenga.
 Most Dignified Girl—Anne Furman. Most Reliable—Eileen Sulima.
 Best Dressed Boy—John Kerbs. School Tease—Joseph Scott.
 Best Dressed Girl—Anne Furman. Accomplished Most for School—Anne Furman.
 Student Most Likely to Succeed—Albert Ullman. Best Dancer—Mildred Devine.
 Shyest—Sam Pennenga.



SENIOR PLAY

On November 22, 1938 the Senior Class gave its annual play, the success of which exceeded even Miss Sullivan's fond hopes.

The play, had an extraordinary title to begin with, "Mama's Baby Boy," and to add to it an extraordinary cast including the following people, Mary Organ as Mrs. McLean, John Kerbs as Mr. Luther Long, Anne Furman as Juliet Long, Howard Jacobsen as Sherdard McLean, Eileen Sulima as Mrs. Arglin, Rosemary McKeever as Mrs. Blackburn, Margaret Clarke as Cynthia Anglin, Frank Martin as Wilbur Warren, Irma Seale as Sylvia Kline, Roland Rhyne as Max Moore and Bernice Eisenschmeid as Minnie.

The plot was a wonder. Mary and John got "that way" about each other. Anne and Howard went back to their childhood days and wore short clothes. Eileen tried to ruin the romance between John and Mary. Rosemary was rejuvenated. Margaret, Irma and Frank much to Anne and Howard's embarrassment followed in their footsteps and went back to their childhood days. Roland was the high pressure salesman and Bernice a colored maid of rare quality.

But without Miss Sullivan all this would have been impossible, for it was her help and superior directing ability that "Mama's Baby Boy" was a success.



JUNIOR CLASS

The Class of 1940 is eagerly awaiting the pleasant year in which we will be Seniors.

In our Freshman year our only claim to fame was a Hallowe'en party which we felt was a great success. Our officers at this time were: President, Joseph Eichele; Vice-President, Anne Furman; Secretary, Irene Steele; Treasurer, James McLoughlin. Our class advisors were Miss Bryson and Mr. VanDyke.

In our Freshman year we were brought up by the Sophomores, that is to say we were "hazed" by them in a "Get Wise" assembly.

In our Sophomore year we seemed to stick to fashion and had another Hallowe'en party.

Our Sophomore officers consisted of President, William Reilly; Vice-President, Richard Finn; Secretary, Helen Huc; and Treasurer, James McLoughlin. Miss Bryson and Mr. Ingles were chosen class advisors.

This year, our Junior year, was very adventurous for us. We started out by electing class officers. Harold Kerbs was chosen President; James McLoughlin, Vice-President; Lois Davis, Secretary; and Margaret Starzycki, Treasurer. Miss Person and Mr. Haynes were chosen class advisors.

Our first activity for the year was the Junior Hop which proved to be a big success. Last but far from least came our long awaited Junior Prom.

Our first three years have proven to be a great success and we know that next year will see us double it.



SOPHOMORE CLASS



In 1937 we entered school for the first time to find that we had a lot to learn and now was as good a time as any to start. We started by election of officers. President, Charles Hocker; Vice-President, Loretta Shaughnessy; Secretary, Mildred Devine and Treasurer, Bernard Farrell. Mrs. Radding and Mr. Woodward were chosen class advisors.

In October we sponsored our first social affair, a Hallowe'en party which proved to be a great success.

In 1938 we again came back to school but this time "superior" Sophomores. We elected Walter Seale as President; Francis Miller as Vice-President; Joseph Fuori as Treasurer and John Hogan as Secretary. Miss Hammill and Mr. Rogers were chosen class advisors.

In May we held a "Get Wise" assembly at which time the Freshmen were made to see who really has the brains. Of course the Sophomores came out on top.

What next year will bring remains to be seen, but knowing the class they are sure to make worthy Juniors.



FRESHMAN CLASS HISTORY



In 1938 we entered upon a new and very thrilling adventure, we had at last become Freshmen!

Our first task was to elect officers for the year. Francis Gleason was elected President; Desmond O'Connell, Vice-President; Patrick Farrell, Secretary and Mary Burke, Treasurer. Miss Cain and Mr. Calhoun were chosen class advisors.

In the magazine campaign we proved ourselves to be worthy salesmen and in May when the Sophomore Class decided to prove themselves superior in wit and intelligence we proved that there were no better sports to be found than the Freshmen Class.

Next year our turn will come to see others as others saw us this year. We only hope that our Sophomore year will prove to be as much fun and as much of a success as this past year has been.



EIGHTH GRADE HISTORY

At the close of our eighth year in the field of growing education we wish to tell you a bit of the school events which have happened through the years.

Almost eight years ago we seated ourselves in the first grade room. To our surprise we found that we could count with real money supplied by Miss Smith.

One year later in the second grade we worked together on a poem which was published in a magazine.

During the next two years we spent most of our time dramatizing stories and plays under the leadership of the Miss Mulveys. As we entered the fifth grade we met and conquered fractions. In the sixth grade the class had an Armistice Day program entitled "The Spirit of Peace."

The next fall the new seventh graders marched proudly into the junior-senior high school building. Going on into the eighth grade we put on two successful plays entitled, "Elmer," and "Patty's Adventures."

Our next important step will be entering high school. The members of the class are:

Theresa Atzberger
 William Bothwell
 Joseph Coffey
 Irene Golembieski
 John Hearl
 Gloria Heines
 Isabella Henry
 Clara Hocker
 Margaret Houck
 Ralph Hubbs

Evelyn Jacobsen
 John Johnston
 Henry Kauffunger
 Jennie Mesagno
 Arthur Murray
 Seth Nichols
 Jewel Pennenga
 Marie Potenziano
 Dorothy Roth
 Enrico Scarselli

Harold Smith



SEVENTH GRADE HISTORY



The Seventh Grade have enjoyed all our years together. Here are a few of the things we accomplished.

In the first grade we made a sand pit. We put little animals and huts in it.

In the third grade we made clocks on paper pie plates. We put pine cones for the pendulum.

In the fourth grade we had an Arbor Day program. We volunteered to say a few speeches.

In the fifth grade we made a very excellent map of the United States. We also had an amateur hour.

In the sixth grade we made a poster of several countries. We all volunteered to draw and color it. On Parent's Night many parents admired it.

Now that we are in the Seventh Grade we are all working very hard so that we may all pass into the eighth grade.

The members of our class are:

- | | |
|-------------------|-----------------|
| Betty Cade | William Klinke |
| Vivian Davis | Robert Kuhlken |
| Julia Dorosh | William Nulty |
| Hans Eisenschmied | Eleanor Roth |
| Leo Featherstone | Lottie Schultz |
| Jane Flynn | Edna Swaine |
| Anthony Fuori | Mary Tahtatagis |
| Kenneth Geackel | William Thomas |
| Lawrence Young | |



MUSIC CLUBS

The Girl's Chorus is composed of girls from the seventh grade through the fourth year in High School. Their major activities included taking part in the Christmas Program and the Music Program on June 1st. The membership is up to forty-two this year and their last appearance will be for Commencement.

The High School Orchestra has had rather a full year. Their engagements have been at the Central Islip Senior Play, St. John's School Program, the Central Islip Drama Festival, Central Islip Music Program, Commencement Exercises as well as playing for a number of High School Assemblies.



BAND

The Band has had what might be termed a snappy purple and gold year. With new uniforms purchased by the school they certainly look fine. Several members represented Central Islip in the Central Long Island Music Festival Band in Belport this Spring.

The Band has played for a number of assemblies as well as in Babylon, Central Islip High School Exhibition Night, Memorial Day, Central Islip Music Program, Brentwood Field Day, and for Class Night Exercises.

FRENCH CLUB

The French Club which enjoyed so many good times last year was started again this year under Miss Hammill, our language instructor.

In December the members went to Port Jefferson to see a French movie entitled "Prenez garde a la Peinture," starring Simone Simon. The picture had the same story as that of the English picture, "The Late Christopher Bean," in which a painter lived all his life in poverty because his true worth was discovered only after his death.

The club members also correspond in French with fellow members, and boys and girls in France.



SCIENCE CLUB

Under the direction of Mr. Rogers, the science club was inaugurated this year. The membership was limited to science students, and as a result, only a few participated.

The members decided not to follow the conventional pattern of electing club officers, and therefore there was a better opportunity for individual work.

During the year, various experiments were planned by different students, and in the spring, the science club gave a series of very interesting demonstrations in assembly. It is hoped that next year's program of the club will accomplish even more.



DRAMATICS CLUB

In December, the Dramatics Club commenced work under the very capable leadership of Miss Dorothy M. Sullivan. At the first meeting, an election of officers was held.

Mildred Devine was elected president; Eileen Sulima, vice-president; Loretta Shaughnessy, secretary and treasurer.

The club cooperated with the senior class to sponsor the Drama Festival, at which time the members were in charge of the make-up, costumes, and stage scenery. The club also helped Miss Sullivan with the Senior Play.



GIRLS' ATHLETICS

The girls' athletics department has been greatly enlarged. More attention has been afforded the girls because they now have an individual instructor.

Soccer was started in the fall as a new sport. Six intra-mural soccer teams were set up and played off for the winner. Only one outside game was played with Smithtown. The girls lost 4-1 but in spite of this fact they played a good game.

Very little was done in the fall in archery.

After Thanksgiving, winter major sports were started: Basketball, Volleyball, ping-pong, Badminton.

Three outside basketball games were played: East Islip—lost; Smithtown—lost; Port Jefferson—won. The girls attended a basketball playday in Riverhead. Those girls on the extra basketball team were: Frances Hesse, Lois Davis, Helen Hucl, Irma Sea'e, Margaret Clarke, Faith Pennenga, Rose Flynn, and Audrey Lindquist.

Intra-mural basketball was played off. Team 6 was the winning team. The list of players on the winning team is: Julia Cappelletti, Irma Sea'e, Doris Davis, Madeline Sarno, Virginia Gaylord, Phyllis Golem-bieski, and Mary McCavanaugh.

Ping-pong was started as a major sport this year. A tournament was held at East Islip. Central Islip placed third. Doubles were Audrey Lindquist and Barbara Spence; Singles: Mary Waddington.

Intra-mural Badminton was played. The winners were: Doubles: Rose Spera and Veronica Boyle.



BOYS' ATHLETICS



SOCCKER

The Soccer team although not a winning group managed to enjoy one of the best seasons since this sport was started at the Central Islip High School. The final league standing found our team holding second place, headed only by Bellport. During the league play the team tied two games with Setauket and Bayport. The only win of the season was at the expense of Center Moriches which was won by the score of 3-0. Eastport and Bellport handed Central Islip its only two defeats. Another game resulted in a tie, that being with Islip, a non-league encounter. Mr. Krause directed soccer.



BASKETBALL

The Basketball team was injured greatly by graduation in June 1938, but the few veterans left from the previous seasons helped to form another combination to finish in second place in Section III. Many of the non-league games were lost either in the last five seconds of play, or by the slim margin of one point. The scores of many of these close games do not show the fine plays that were made, they do not indicate the good teamwork. This year's team was captained by John Fuori. Other members to take part in many of the games were: James McLaughlin, James Reilly, Albert Ullman, Joseph Fuori, Roland Rhyne and John Simms. New material has shown itself this past season and Central Islip should be able to fill the gaps made by the graduating Seniors of this year's team. Mr. Krause directed basketball.



PING PONG

Central Islip entered the Ping Pong league this year and made a good showing, beating two schools that have been in this competition before. Robert Musa, John Fuori, Erwin Houck and Frank Spiceman performed most notably in this sport. In the intra-murals Bernard Farrell won first place and Patrick Farrell second. Mr. Krause directed Ping Pong.

TRACK

The Track team in its second year as a sport at Central Islip proved to be unbeatable in dual competition in a rather easy schedule. The only team to beat this year's track team was Bayport, this being in a three cornered meet with East Islip. Central Islip placed second. The most notable work was turned in by Albert Ullman and John Kerbs. These boys were sure point winners in every meet. Erwin Houck won the "Class B" championship in the Suffolk County Track Championships held at Patchogue in the mile run. The Cross Country team won one meet of a three meet schedule. In the county meet the team did not win but Erwin Houck won first place when he led a large field to the finish. Mr. Woodward directed track.



GOLF

The Golf team of 1939 played a most difficult and extensive schedule. At this writing they have won seven and lost four matches. The Suffolk County Championship found Joseph Fuori as the 1939 champion. John Fuori teamed with his brother Joe finished in a tie with Southampton for the two-man championship. In the play-off Central Islip won by a wide margin. Schools with whom matches were played were East Islip, Bellport, Sayville, Setauket, Amityville, Hicksville, Farmingdale, and the Suffolk County tournament. Members of the team were John, Joseph, Thomas Fuori, Donald Lindquist, Delmer Durgin and Maurice McTiernan. Mr. Rude directed golf.



BASEBALL

Last June's graduation left the baseball team with only three players from the team of the year before. The season had to be spent in building up experience — meanwhile losing games resulted. Three games at this writing have been lost by one run. This team although not of championship caliber should be congratulated on its fine spirit and sportsmanship. With such prospects Central Islip can look forward to a winner next year. Norbert Weber pitched a one-hit game, losing to Kings Park 1-0 in an extra inning. Norbert has shown exceptional improvement with this one year experience and can be counted on to pitch some fine games next year. Mr. Krause directed baseball.



S. CLARK
DEPARTMENT STORES
CENTRAL ISLIP, L. I.

THE
I. CLARK AGENCY
REAL ESTATE — INSURANCE
CENTRAL ISLIP — ISLIP

CENTRAL ISLIP
G. L. F. SERVICE
Seeds, Poultry, Feeds and Fertilizer

M. BENSTOCK AND SON
GROCERY AND HARDWARE STORES
CENTRAL ISLIP, L. I.

DE SOTO — PLYMOUTH
SALES AND SERVICE
JOHNSON - RHODES, Inc.
Carleton and Suffolk Aves.
Central Islip, L. I.

L. G. BALFOUR COMPANY
ATTLEBORO, MASSACHUSETTS
Representative: W. G. Pfoir,
535 Fifth Ave., New York, N. Y.

Carleton Avenue Service Station

GAS - OIL - GREASE
POLISHING

SINCLAIR PRODUCTS

"We Serve to Please"

FRED HESSE, Prop.
Central Islip, L. I.

BERNSTEIN'S
DEPARTMENT STORE
Harry Bernstein, Prop.
CENTRAL ISLIP, L. I.

JAMES J. MOLONEY
FUNERAL DIRECTOR
Carleton Avenue, Central Islip
5 Fifth Avenue, Bay Shore

HENRY F. WOLF
Automobiles, Repairing and Supplies
CENTRAL ISLIP, L. I.

Compliments of
BOTFIELD'S DRUG STORE
CENTRAL ISLIP, L. I.

Henry M. Koch
LICENSED
REAL ESTATE BROKER

CARLETON AVENUE
Near Hospital Entrance
CENTRAL ISLIP, L. I.

Compliments of
V. L. Furman, Inc.
REAL ESTATE and INSURANCE
CENTRAL ISLIP
BRENTWOOD

AUTOGRAPHS

